

Multi-Scale Deep Learning for Estimating Horizontal Velocity Fields on the Solar Surface

Ryohtaroh T. Ishikawa^{1,2}, Motoki Nakata³, Yukio Katsukawa^{1,2}, Youhei Masada⁴, and Tino L. Riethmüller⁵

¹ Department of Astronomical Science, School of Physical Sciences, The Graduate University for Advanced Studies, SOKENDAI, 2-21-1 Osawa, Mitaka, Tokyo 181-8588, Japan e-mail: ryohtaroh.ishikawa@grad.nao.ac.jp

² National Astronomical Observatory of Japan, 2-21-1 Osawa, Mitaka, Tokyo 181-8588, Japan

³ National Institute for Fusion Science, 322-6 Oroshi-cho, Toki, Gifu 509-5292, Japan

⁴ Department of Physics and Astronomy, Aichi University of Education, Kariya, Aichi 446-8501, Japan

⁵ Max-Planck-Institut für Sonnensystemforschung (MPS), Justus-von-Liebig-Weg 3, 37077, Göttingen, Germany

Received ***; accepted ***

ABSTRACT

Context. The dynamics in the photosphere is governed by the multi-scale turbulent convection termed as granulation and supergranulation. It is important to derive three-dimensional velocity vectors to understand the nature of the turbulent convection and to evaluate the vertical Poynting flux toward the upper atmosphere. The line-of-sight component of the velocity can be obtained by observing the Doppler shifts. However, it is difficult to obtain the velocity component perpendicular to the line-of-sight, which corresponds to the horizontal velocity in disk center observations.

Aims. To develop a new method based on a deep neural network that can estimate the horizontal velocity from the spatial and temporal variations of the intensity and vertical velocity and to suggest a new measure for examining the performance of the method.

Methods. We developed a convolutional neural network model with a multi-scale deep learning architecture. The method consists of multiple convolutional kernels with various sizes of the receptive fields, and it performs convolution for spatial and temporal axes. The network is trained with data from three different numerical simulations of turbulent convection. Furthermore, we introduced a novel coherence spectrum to assess the horizontal velocity fields that were derived at each spatial scale.

Results. The multi-scale deep learning method successfully predicts the horizontal velocities for each convection simulation in terms of the global-correlation-coefficient, which is often used for evaluating the prediction accuracy of the methods. The coherence spectrum reveals the strong dependence of the correlation coefficients on the spatial scales. Although coherence spectra are higher than 0.9 for large-scale structures, they drastically decrease to less than 0.3 for small-scale structures wherein the global-correlation-coefficient indicates a high value of approximately 0.95. By comparing the results of the three convection simulations, we determined that this decrease in the coherence spectrum occurs around the energy injection scales, which are characterized by the peak of the power spectra of the vertical velocities.

Conclusions. The accuracy for the small-scale structures is not guaranteed solely by the global-correlation-coefficient. To improve the accuracy in small-scales, it is important to improve the loss function for enhancing the small-scale structures and to utilize other physical quantities related to the non-linear cascade of convective eddies as input data.

Key words. Sun: granulation – Sun: photosphere – methods: observational – methods: data analysis

1. Introduction

The dynamics in the solar photosphere are governed by thermally driven convection. This in turn produces cellular patterns termed as granules that are observed in visible-light continuum images. The bright areas with hot rising flows are surrounded by darker and cooler intergranular lanes. A typical granule has a diameter of approximately 1000 km and lasts for approximately 10 min (Nordlund et al. 2009 and references therein). The turbulent nature of the granular convection inherently creates small-scale flow structures that are smaller than the typical size of granules (e.g. Matsumoto & Kitai 2012; Katsukawa & Orozco Suárez 2012; Rempel 2018). These types of small-scale flows interact with magnetic fields and can produce the Poynting flux upward. This in turn can drive various phenomena, such as explosions (Shibata et al. 2007; Toriumi et al. 2017), jets (Hollweg et al. 1982; Iijima & Yokoyama 2017), and heating (van Ballegoijen 2011; De Pontieu et al. 2012), in the upper atmosphere, chromosphere, and corona. Supergranulation is another convective

patterns observed on the solar surface, which is characterized by a horizontal flow fields with the large spatial scale of about 30 Mm (Rieutord et al. 2010b) and the typical lifetime of about 1.7 days (Hirzberger et al. 2008). Photospheric magnetic fields are passively advected into the edges of supergranules and form network structures (Gošić et al. 2014). Recent observation found that persistent vortex flows exist at supergranular vertices, and magnetic flux can be concentrated in the vortices (Requerey et al. 2018).

We can obtain the line-of-sight (LOS) component of the flow velocities by a spectroscopic observation via the Doppler effect. Conversely, to date, there are no direct methods for observing the components perpendicular to the LOS. These components correspond to the horizontal velocity on the solar surface in disk center observations. The most commonly used method for estimating the horizontal velocity field is local correlation tracking (LCT; November & Simon 1988). This method uses two consecutive images and computes the cross-correlation, and thereby detects the motions of granule patterns. Although the LCT tech-

Table 1. Number of kernels in each convolutional layer.

	3×3	7×7	15×15	31×31	51×51
3D Conv	60	40	20	10	5
2D Reduce	20	10	5	5	2
2D Conv	60	40	20	10	5

Notes. '2D Reduce' indicates 1×1 convolution before each 2D convolutional layer.

nique can evaluate the horizontal velocity with good accuracy on a larger scale, its accuracy on a scale smaller than granules is limited by as much as factor of three (Verma et al. 2013) or more (Malherbe et al. 2018). The errors are preferentially high in the boundaries between granular cells (Louis et al. 2015). This is mainly due to the fact that the window utilized in the LCT method to compute the cross-correlations blurs velocity fields. However, the accuracy on a smaller scale is important for evaluating the interaction between magnetic fields and horizontal flows because the magnetic fields are often concentrated in small regions in the photosphere (e.g., Parnell 2002).

An alternative approach involves identifying features that are observed as bright points in G-band or continuum images and obtaining horizontal velocities by tracking them (Berger et al. 1998; Utz et al. 2010). The method can provide horizontal velocities of small magnetic features in intergranular lanes. Given that such magnetic features appear associated with strong concentrations of magnetic fields, we cannot obtain velocity fields and their spatial distribution across the entire areas by using this method.

There is a new method for estimating the horizontal velocity that employs a deep learning approach. Asensio Ramos et al. (2017) developed a model using a convolutional neural network (DeepVel), which was trained on a set of velocity fields simulated for the photosphere. DeepVel can estimate the horizontal velocity at various heights in the solar atmosphere without averaging. Tremblay et al. (2021a) showed that the Pearson linear correlation between the estimation and the answer was approximately 0.8. The correlation increases when the horizontal velocity fields are averaged over several granular lifetimes (Tremblay et al. 2018); the increment of the accuracy by taking the average shows the same trend as the LCT. The results of DeepVel and LCT are similar when they are averaged, however, DeepVel still has the advantage of reproducing the kinetic power spectra on sub-supergranule scales. Tremblay & Attie (2020) developed a new architecture for DeepVel using the U-NET architecture and found that it is more effective than other tracking methods. However, their accuracies were not verified at various spatial scales.

There are several concerns of estimating the horizontal velocity on small scales, which should be clarified before we use the method for observational data. The motivation of this study was to evaluate the accuracy of the above methods on various spatial scales and reveal their weaknesses and possible improvements. We developed a new method for estimating the spatial distribution of the horizontal velocity based on a multi-scale deep learning architecture with several sizes of convolutional kernels to capture the multi-scale nature of the solar convection. We adopted the new method to three different numerical simulations of convection and discussed the relationship between the power spectra of the velocities and performance of the network. Furthermore, we suggest a new measure for evaluating the scale-by-scale velocity estimation.

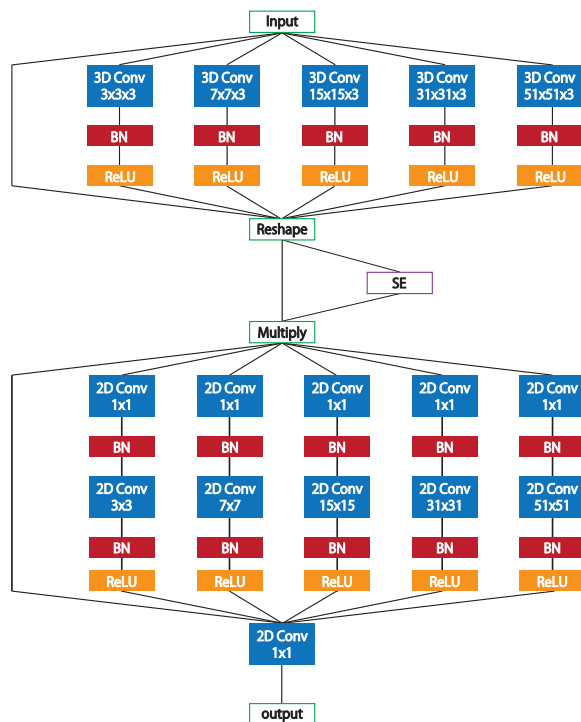


Fig. 1. Structure of the network. BN and SE denote the batch normalization and squeeze-and-excitation, respectively. The number of kernels in each convolutional layer is presented in Table 1.

2. Method

We developed a convolutional neural network that predicts the spatial distribution of the horizontal velocity from the spatial and temporal variations of vertical velocity and temperature¹. This model includes multi-scale deep learning architectures: the convolution layers have various sizes of the receptive fields (Figure 1 and Table 1). The sizes of the kernels corresponded to 3×3 , 7×7 , 15×15 , 31×31 , and 51×51 . This type of multi-scale architecture exhibits an advantage in detecting the solar convection motion, which is highly turbulent to the extent that the horizontal velocities exhibit broad power spectra. This architecture is similar to the inception module (Szegedy et al. 2014). The inception module is a network that consists of kernels with various sizes, i.e., 1×1 , 3×3 , and 5×5 , and the pooling layer. By utilizing the kernels with varying sizes, the inception module can not only efficiently detect spatially concentrated structures in a single region but also highly spread structures.

In the first block of the model, 3-dimensional convolutions were conducted along the spatial and temporal axes, and the channels corresponded to the different physical quantities. After the first block, the data was reshaped, and thereby time and physical quantities were converged into the new channels. Then, in the second block, the convolutions were conducted only along

¹ The trained network and sample data set can be found in <https://github.com/RT-Ishikawa/MultiScaleDL>.

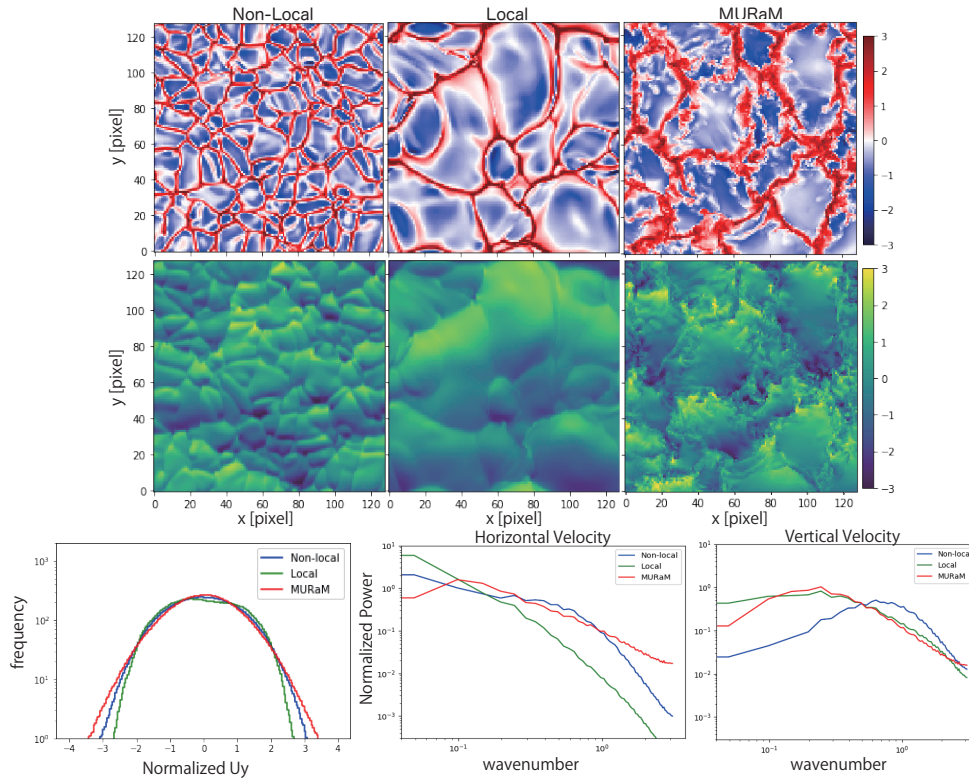


Fig. 2. Representation of the training data sets. The spatial distributions of the vertical velocities (top panels) and Y component of the horizontal velocities (middle panels) of the non-local (left), local (center), and MURaM (right) simulation data. The bottom panels show the probability density functions (left), power spectra of the horizontal velocities (center), and power spectra of the vertical velocities (right) of the three simulations. The vertical and horizontal velocities in the simulations are normalized with zero and unit dispersion. This satisfies Equation (3).

the spatial axes. A potential problem corresponds to the large number of parameters due to the large size of kernels corresponding to 31×31 and 51×51 . To reduce the number of parameters, we also included 1×1 convolutions before each convolution layer. Furthermore, some of the outputs of the convolutions were highly correlated. This can decrease the efficiency of the optimization. The 1×1 bottle-neck layer can partially resolve this problem. After the 3-dimensional convolutions, the feature maps have 4 dimensions: two spatial axes, temporal axes, and channels. The reshape layer concatenates the temporal axes and the channels to change the structure of the feature maps into 3 dimensions. The squeeze-and-excitation block (Hu et al. 2018) can improve the performance of the network by modelling interdependencies between the channels. This squeeze-and-excitation block produces a collection of modulation weights for the channels. These weights are applied to the feature maps by multiplying and the results are fed into the subsequent layers. Additionally, we included the batch normalization (Ioffe & Szededy 2015) after all the convolutions. This normalized the outputs of convolutions into zero mean and unit covariance, and this in turn accelerated the training. All the convolution layers were initialized with a random method (He et al. 2015a). Asensio Ramos et al. (2017) developed a deep neural network model (DeepVel) to estimate the horizontal velocity. Their model was based on ResNet (He et al. 2015b), which consists of deeply stacked layers with only 2-dimensional convolutions² with a receptive field

of 3×3 . The total number of trainable parameters of our model corresponded to $\sim 4.0 \times 10^5$, which was less than that of DeepVel by a factor of 4.

3. Data

To train the neural network, we used numerical simulation data in three different types of convection models. By comparing several cases with different energy injection scales and spectral properties, we can evaluate and discuss the versatility of the neural network.

The first model is a convection model, in which convection is driven via cooling at the top boundary. We termed this model as *non-local* one. The 3-dimensional compressible MHD turbulence without any rotations was considered in a Cartesian domain by covering the depth of the convection zone (Masada & Sano 2016). The horizontal sizes of the domain were four times larger than the vertical size. The super-adiabatic condition with the superadiabaticity $\delta \approx 10^{-5}$ was imposed on only 5% of the region to ensure that the top boundary was convectively unstable, whereas the remaining part of the region remained adiabatic to ensure convective stability. The cool downward plumes produced near the top boundary drove the convection: fast downward motions with the entrainment behavior appeared locally and transiently.

The second model was termed as *local* model. This is a convection model, in which convection is driven by local entropy-gradient. The entire convective zone was convectively unstable

² Asensio Ramos et al. (2017) that describe the convolution as ‘3-dimensional’. The convolution was performed along spatial axes (x and y axes) and also dealt with the channels. In this paper, we termed this as ‘2-dimensional’ after the procedure name ‘Conv2D’ in Keras. The

3-dimensional convolution in our network represents the convolution along the spatial and time axes as channels.

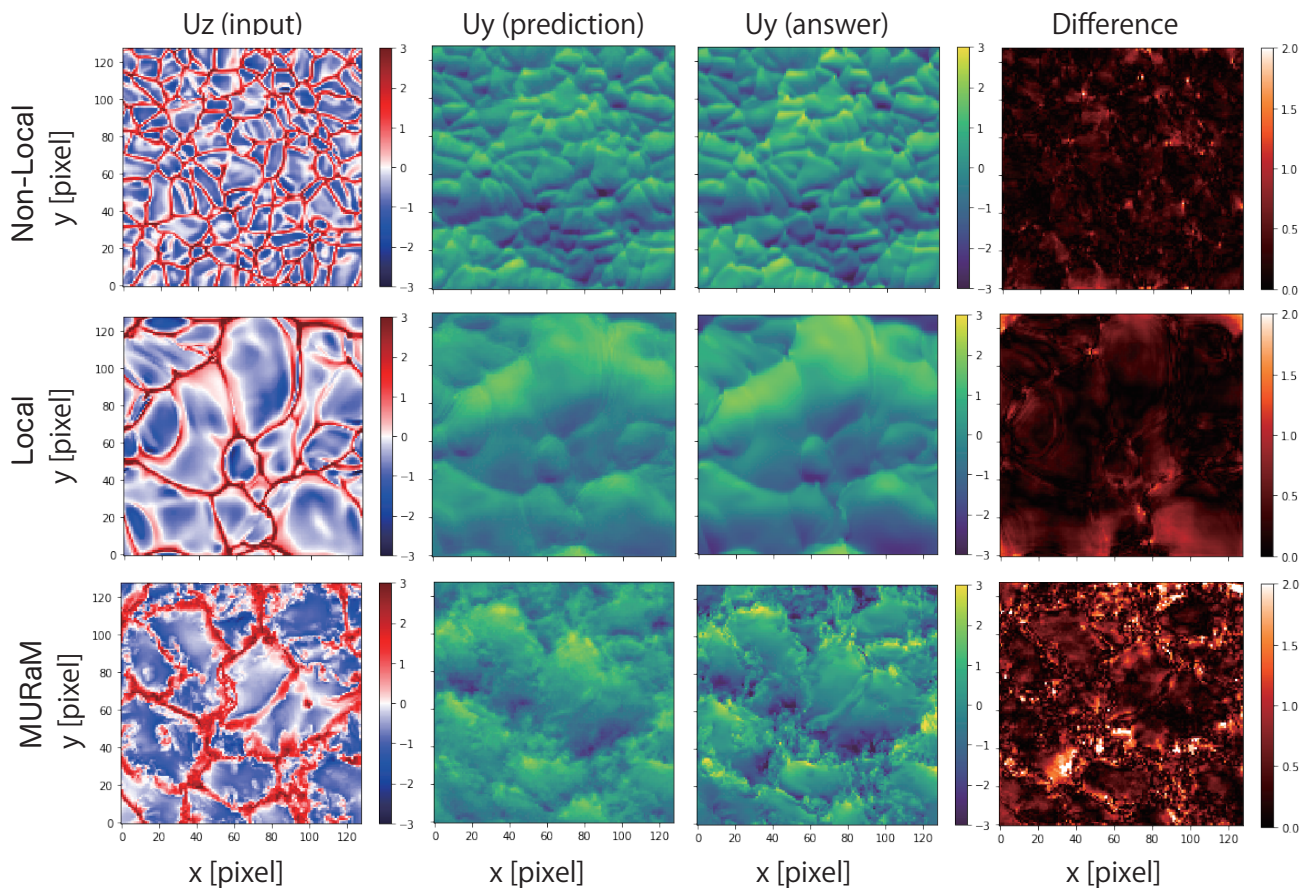


Fig. 3. Spatial distributions of the vertical velocity, Y component of the horizontal velocities during the prediction and simulation, and the difference between them in the Non-local model (top), the Local model (middle), and the MURaM model (bottom), respectively. The vertical velocity and horizontal velocity in the simulation are normalized as zero mean with unit dispersion. It should be noted that the vertical velocity and temperature are used for the inputs even though only the vertical velocity is shown in this figure.

with super-adiabatic conditions. The same Cartesian domain was considered as that in the non-local model. Unlike the non-local model, convective cells were generated over the entire convective zone, in which the spatial scale of cells were dependent on the local scale height in the vertical direction (Cossette & Rast 2016). Hence, the convective motions with larger cells, which were produced near the bottom region, were more pronounced in the local model when compared to those in the non-local model.

In the numerical simulations of the non-local and local models, a spatial resolution of $256 \times 256 \times 128$ was used. The other physical and numerical parameters were similar to those in an earlier study by Masada & Sano (2016) (see Yokoi et al. 2021 for details.) The apparent convective cells in the non-local and local simulations roughly correspond to supergranular cells rather than granular ones. The spatio-temporal data of the simulated turbulent fields were utilized for training the network, where the MHD turbulence was fully developed to the statistically steady state after several tens of the turnover time of the convective cells. We used the temperature and vertical velocities at 3.3 Mm below the top boundary as the input data of the network. Furthermore, the horizontal velocities were at the same depth as the corresponding ground truth. We performed downsampling for these

data by setting their sizes to 128×128 pixels, which covered a region of $748 \text{ Mm} \times 748 \text{ Mm}$. Specifically, 1000 snapshots were available for both the models. Because the input data do not represent the parameters on the surface, the trained network is not directly applicable to an observation. Instead, we compare the characteristics of the network with those trained with a realistic simulation, as described below.

We also used a three-dimensional compressible radiation MHD simulation, which was calculated with the MURaM code (Vögler et al. 2005), as the third model. In the code, the radiative energy exchange was solved via a non-gray radiative transfer under the assumption of local thermal equilibrium (LTE) to reproduce more realistic granular scale flows in the photosphere. Hence, in this study, we used the same simulation setup as that used by Riethmüller et al. (2014), in which the simulation box covered 6 Mm in both horizontal directions with a grid size of 10.42 km and 1.4 Mm in the vertical direction with a 14-km grid size. A unipolar homogeneous vertical magnetic field of $B_z = 30 \text{ G}$ was introduced as an initial condition, and the simulation was run for a total solar time of 16 h, which was long enough to reach a statistically stationary state. We obtained more than 1600 snapshots of the data cube with a mean cadence of 35 s. We extracted

a small region, which covers 5.4 Mm in both the horizontal directions, and downsampled the region with a grid size of 42 km. Thus, the size of the region corresponded to 128×128 pixels. We used the temperature and vertical velocity at the surface with an optical depth of unity.

The snapshots of the three simulations are shown in Figure 2. The top three panels show the spatial distributions of the vertical velocities (U_z), while the middle three panels show those of the horizontal velocities (U_y). The vertical and horizontal velocities of each model were normalized with averages and standard deviations. The bottom left panel shows the probability density functions of the horizontal velocities of the three simulations. The fast velocity component existed in certain localized regions within short lifetimes. This appeared as a non-gaussian distribution in the probability density function. The power spectra of the horizontal and vertical velocities are shown in the bottom center and right panels. Here, the power spectrum of a physical quantity X is defined as follows:

$$E_X(k) = \frac{1}{2\Delta k} \sum_{\sqrt{k_x^2+k_y^2} \in [k-\Delta k/2, k+\Delta k/2]} |\hat{X}(k_x, k_y)|^2, \quad (1)$$

where Δk denotes the sampling interval of the wavenumber and \hat{X} denotes the Fourier transform of the spatial distributions of the physical quantity X . The Fourier transform of X is as follows:

$$\hat{X}(k_x, k_y) = \frac{1}{N^2} \sum_{x,y} X(x, y) \exp[-i(k_x x + k_y y)], \quad (2)$$

where N^2 denotes the number of pixels in an image, which corresponded to 128×128. Then, the power spectrum was consistent with that defined in a previous study (Rieutord et al. 2010a) and satisfied

$$\frac{1}{2} \overline{X^2} = \int_0^\infty E_X(k) dk, \quad (3)$$

where the overline denotes the average over the entire FOV. Given the normalization of the vertical and horizontal velocities, the dispersion $\overline{X^2}$ corresponded to unity.

The power spectra of the vertical velocity showed their peaks. These peaks corresponded to the 'typical' scales of the convective cells, while the spectra were broad. The power spectra of the horizontal velocity exhibited high power on large-scales, whereas they did not exhibit clear peaks, especially in the non-local and local models.

4. Training process

We used the spatial distributions of temperature and vertical velocity with a size of 128 × 128 pixels and three consecutive frames as the input data. The output of the network was the spatial distribution of the horizontal velocity (U_x or U_y). We used the mean squared error between the horizontal velocities predicted by the network and those in the original data set for the loss function. The loss function was expected to be minimized in the training. Each physical quantity in the data set was normalized to zero average and unit standard deviation. We prepared 350 sets of data for the training, 40 sets for the cross-validation, and 40 sets for the test. Although the snapshots in the data sets were temporally consecutive, the training, cross-validation, and test data sets were separated sufficiently with an ample time interval that was longer than the turn-over times of the convection

Table 2. Global-correlation-coefficients with different inputs.

	Non-local	Local	MURaM
U_z, T	0.948	0.948	0.771
U_z	0.942	0.950	0.738
T	0.890	0.884	0.668

in all the simulations. The optimization of the network was performed by using the Adam first-order gradient-based optimization (Kingma & Ba 2014).

Given the normalization of the training data set, the average and standard deviation of the horizontal velocity predicted by the network were also near zero and unity, respectively. When we develop a network for application to an actual observational data, the network should be supervised by realistic numerical simulations of the photosphere, such as MURaM, with the spectral line synthesis and degradation with respect to the point-spread-function of observational instruments. The network should predict the absolute value of the horizontal velocity without any normalization. Hence, restoration of the velocity from the normalized value after the prediction by multiplying the standard deviation of the horizontal velocity in the simulation or that obtained with recent observations (e.g., Oba et al. 2020) can potentially be an option.

5. Results

In this section, we show the comparison between the original simulation and model prediction of the horizontal velocities for the three convection models. In the LCT and DeepVel, only the emergent intensity distributions were used for the estimation. Furthermore, we used the vertical velocity distributions for the input of the network and examined their benefits. Table 2 lists the results with different inputs for each convection model. The results showed that higher accuracy of estimation was realized by using the vertical velocity when compared to the temperature distributions. This result is consistent with Tremblay & Attie (2020). By using vertical velocity and temperature, the network exhibited the highest global-correlation-coefficient. However, it was slightly smaller than that obtained by using only vertical velocity for the local model. In the rest of this paper, we focus on the network that uses the vertical velocity and temperature as the input.

Figure 3 compares the horizontal velocity distributions in the simulation and prediction for each convection model. In the figure, similar cellular patterns are observed in the simulated and predicted distributions. The global-correlation-coefficients were 0.948, 0.948, and 0.771 for the non-local, local, and MURaM models, respectively. The performance of the network for the MURaM model was worse when compared with those for the non-local and local models in terms of the global-correlation-coefficients, and the predicted patterns appeared blurred. The right column in Figure 3 shows the differences between the simulations and predictions. The difference was expected to be likely high at the boundaries between the convection cells. This was similar to the trend observed in the case of the LCT method (Louis et al. 2015). Although only the results for the U_y are shown in the Figure, the results for the U_x are similar to those because of the symmetric setup of the simulation and the network.

Figure 4 shows the comparisons between the simulated velocity fields and predicted velocity fields in terms of the power spectra and histograms. The power spectra of the predicted hor-

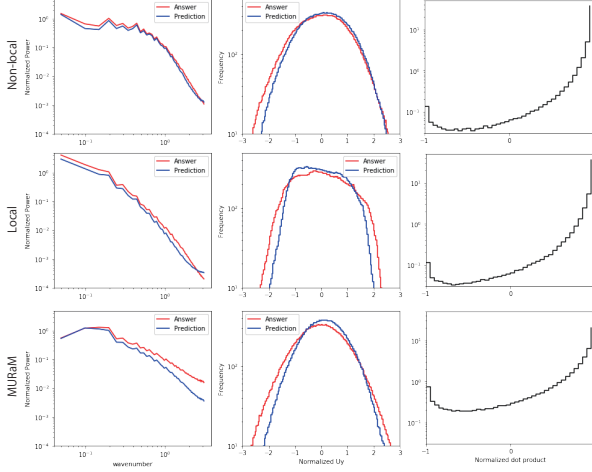


Fig. 4. Comparison between the simulated velocity field (red) and predicted velocity (blue) in terms of power spectra (left) and histograms (center). The histograms of normalized dot product (see Eq. 4) are shown in the right column.

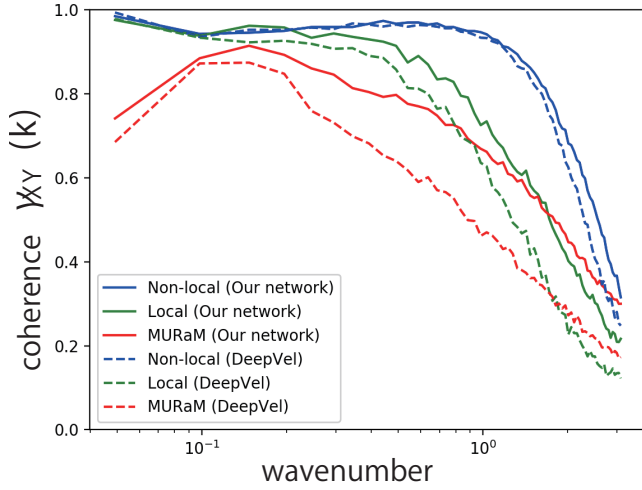


Fig. 5. Coherence spectra between the simulation and prediction as a function of the wavenumber with our network (solid) and DeepVel (dashed; Asensio Ramos et al. 2017). It should be noted that the vertical velocity distribution as opposed to the emergent intensity is used for the input to DeepVel. The coherence spectra show strong scale-dependence.

horizontal velocity distributions were similar to those of the simulation in the larger scales. However, the power spectra were slightly underestimated in all the scales and noticeable errors were observed in the smaller scales. In the case of the MURaM model, the network significantly underestimated the velocity in small-scales. The occurrence of the fast velocities became less frequent in the predictions. The blur in the images blended the fast velocity components which were preferentially localized in the small regions.

We also investigated dot products between the estimated and simulated horizontal velocity vectors. The normalized dot prod-

uct at each pixel is defined as follows:

$$A = \frac{\mathbf{v} \cdot \mathbf{v}_0}{\|\mathbf{v}\| \|\mathbf{v}_0\|}, \quad (4)$$

where \mathbf{v} and \mathbf{v}_0 represent the estimated and simulated horizontal velocity vectors, respectively. This definition is consistent with Tremblay & Attie (2020) and Tremblay et al. (2021b). This dot product indicates the difference of the orientation of the vectors. The histograms shown in the right column of Figure 4 have a peak around $A \sim 1$, which indicates that the estimated and simulated horizontal velocity vectors are well aligned in most regions. The histograms have tails toward the negative dot products, although the fraction of the tails is small. The tail is relatively large in the histograms of the MURaM model. The averages of the normalized dot products are 0.92, 0.91, and 0.70 for the non-local, local, and MURaM models, respectively.

To examine the performance of the network, we defined the coherence spectrum, which represents the correlation at each wavenumber. This has never been introduced in past studies including as Louis et al. (2015) and Asensio Ramos et al. (2017). The coherence spectrum of distributions of two physical quantities X and Y can be defined as follows. First, we calculate the cross-spectrum of X and Y as follows:

$$S_{XY}(k) = \frac{1}{2\Delta k} \sum_{\sqrt{k_x^2 + k_y^2} \in [k - \Delta k/2, k + \Delta k/2]} \langle \hat{X}^* \hat{Y} \rangle(k_x, k_y), \quad (5)$$

where asterisk denotes the complex conjugate, and the ensemble average $\langle \rangle$ is calculated over all the 40 frames in the test data. Finally, we defined the coherence spectrum by normalizing the cross-spectrum with the average power spectra as follows:

$$\gamma_{XY}(k) = \frac{S_{XY}(k)}{\sqrt{\langle E_X \rangle(k) \langle E_Y \rangle(k)}}. \quad (6)$$

The cross-spectrum $\hat{X}^* \hat{Y}$ is equivalent to the Fourier transform of the cross-correlation function of X and Y . Therefore, the coherence spectrum $\gamma_{XY}(k)$ represents the correlation between the two distributions at each wavenumber. A useful relationship exists among the coherence spectrum, power spectra, and global-correlation-coefficient as follows:

$$R_{XY}(0, 0) = \frac{\sum_k \sqrt{\langle E_X \rangle \langle E_Y \rangle} \gamma_{XY}(k)}{\sqrt{\sum_k \langle E_X \rangle(k) \sum_{k'} \langle E_Y \rangle(k')}} \approx \frac{\sum_k \langle E_X \rangle(k) \gamma_{XY}(k)}{\sum_k \langle E_X \rangle(k)}, \quad (7)$$

where $R_{XY}(0, 0)$ denotes the global-correlation-coefficient without any translation (see Appendix A). This equation indicates that the global-correlation-coefficient is equivalent to the average of the coherence spectrum weighted with the power spectra. Hence, this highlights the importance of the coherence spectrum analysis, shown in this study, in examining the prediction accuracy scale-by-scale, particularly in small-scale structures. As evident in the local model, the power spectrum of the horizontal velocity exhibited high power in large-scales. Subsequently, the coherence spectra of large-scales exhibited high importance for the global-correlation-coefficient. Conversely, the power spectrum of the horizontal velocity in the MURaM model exhibited relatively high power in small-scales when compared to the non-local and local models. This indicated higher importance of the coherence spectra of small-scales.

The results of the coherence spectra $\gamma_{XY}(k)$ for the three convection models are shown in Figure 5. We reconstructed the DeepVel and trained it with three convection simulations with vertical velocity as the input, while the original DeepVel was

trained with the emergent intensity. The performance of our network was similar or better than that of DeepVel for all the simulation data and at all the wavenumbers with the exception of the large-scale in the non-local model. However, it was still difficult to reproduce the small-scale structures. In the non-local and local models, the coherence spectra exceeded 0.9 for small wavenumbers and they drastically decreased to 0.3 or less for large wavenumbers. Furthermore, even the global-correlation-coefficients for both the models exceeded 0.9. The discussion on the small-scale structures should be treated with care even if the global-correlation-coefficient is high. In the MURaM model, which exhibited lower steep power spectra of the horizontal velocity (Figure 2), the performance was limited in a wide range of wavenumbers when compared with those of the non-local and local cases. However, a rough trend and better accuracy in large-scales were observed.

When comparing the results of the three convection models, it can be observed that the different onset of the significant decrease in the coherence spectrum appears on smaller scales as opposed to on energy injection scales where the power spectra of the vertical velocities have their peaks. This signature suggests that the decrease in performance is not simply due to the small size of the spatial patterns, but also due to a reason related to turbulent structures. For example, the energy injection scale of $k \sim 0.7$, which is observed from the power spectrum of the vertical velocity in the non-local case (Figure 2), is correlated to the onset wavenumber for degrading the prediction accuracy toward the high wavenumber region. This is attributed to the non-linear cascade of convective eddies. As presented in Table 2 the high performance of this network relies on the vertical velocity. This implies that the relationship between the horizontal and vertical flows is rather simple in large-scales, whereas it is more complex in small-scales probably due to the non-linearity.

The small global-correlation-coefficient for the MURaM model is related to two characteristics of the convection: large energy injection scale and small slope of the power spectra. The energy injection scale is higher than that of the non-local model, which diminishes the coherence spectra in a wide range of spatial scales. In combination with the higher power in the small-scales, the resultant global-correlation-coefficient becomes small for the MURaM model. A large global-correlation-coefficient was realized for the local model even though the energy injection scale was similar to that in the MURaM model. This was due to the fact that the power spectrum of the horizontal velocity in the local model exhibited a steep slope, which in turn induced large weights on the large-scales.

To improve the accuracy at smaller scales, the optimization of the small kernels should be performed more efficiently. A potential method of realizing this involves improving the loss function. In this study, the network was trained by minimizing the mean-squared-error between the prediction and simulation. Given that the horizontal velocity distribution exhibits high power in large-scales, as shown in Figure 2, larger weights are used on the larger scale structures for the loss function. This can promote the learning of the large-scale structures and can inhibit the detection of the small-scale structures. Hence, an appropriate loss function can improve the optimization. An alternative method involves increasing the number of physical quantities to the input. In this study, the spatial distributions of the vertical velocity and temperature were used as the input data. It can be beneficial to use other physical quantities, which are associated with the non-linear process such as the velocities at multiple heights. Furthermore, the spatial distributions with small-scale enhance-

ment obtained via pre-processing can also aid in improving the performance.

6. Conclusions

We developed a novel convolutional neural network to estimate the spatial distribution of horizontal velocity by using the spatial distributions of temperature and vertical velocity. This new network was comprised of convolutional layers with various sizes of receptive fields. This led to efficient detection of spatially spread features and concentrated features. Given that the velocity distribution driven by the convection exhibited multi-scale structures and broad power spectra, this type of a multi-scale network exhibited an advantage in detecting the solar surface convective motion. Our network exhibited a higher performance on almost all the spatial scales when compared to those reported in previous studies.

In most previous studies, the evaluation of the method was performed solely via the global-correlation-coefficient between the simulated velocity field and prediction velocity field. This in turn cannot show the accuracy on different spatial scales. To evaluate the accuracy at each scale, we introduced the coherence spectrum, which represents the correlation at each wavenumber. The evaluation with the coherence spectrum revealed the strong scale-dependence of the accuracy. The horizontal velocities at large-scales were well predicted with our network, while those at small-scales were limited. Recently, the small-scale vortical motions in the solar photosphere has attracted significant attention observationally (Bonet et al. 2008; Vargas Domínguez et al. 2011) and theoretically (Shelyag et al. 2011; Moll et al. 2011). However, given the rapid decrease of the accuracy in estimating the horizontal velocities toward the small-scales, we should be careful when discussing them observationally. The accuracy for the small-scale structures is crucial for calculating vorticities via a derivative of horizontal velocities.

By comparing the results of the three convection models, we observed that the rapid decrease in coherence spectrum occurred on the scales that were lower than the energy injection scales, which were characterized by the peaks of the power spectra of the vertical velocities. This implies that the network was not appropriately trained to reproduce the velocity fields in small-scales generated by turbulent cascades. To improve the accuracy on small-scales, it is potentially important to consider improving the loss function in the network. This can be realized by adding more weights on the small-scale structures and inputting other physical quantities, such as the vertical velocities at multiple heights, which can be related to the non-linear process. These challenges can be explored in future studies.

In this study we developed a new model for estimating the horizontal velocity field with numerical simulation data and evaluated its performance with a new measure. By adopting our network to the high-resolution observation data obtained via the SUNRISE-3 balloon-borne telescope (Katsukawa et al. 2020; Feller et al. 2020) and Daniel K. Inouye Solar Telescope (Rimmele et al. 2020; Rast et al. 2021), we can estimate the horizontal velocity distributions with a high accuracy in a wide range of wavenumbers.

Acknowledgements. R.T.I. is supported by JSPS Research Fellowships for Young Scientists. This study is supported by the NINS program for cross-disciplinary study on Turbulence, Transport, and Heating Dynamics in Laboratory and Astrophysical Plasmas: “SoLaBo-X” (Grant Numbers 01321802 and 01311904) and by JSPS KAKENHI Grant Numbers JP18H05234 (PI: Y. Katsukawa), JP19J20294 (PI: R.T. Ishikawa), and 20KK0072 (PI: S. Toriumi).

References

- Asensio Ramos, A., Requerey, I. S., & Vitas, N. 2017, A&A, 604, A11
- Berger, Thomas E., Löfdahl, Mats G., Shine, Richard S., & Title, Alan, M. 1998, ApJ, 495, 973-983
- Bonet, J. A., Márquez, I., Sánchez Almeida, J., et al. 2008, ApJL, 687, L131
- Cossette, J-F, Rast, M. P. 2016, ApJL, 829, L17
- De Pontieu, B., Carlsson, M., Rouppe van der Voort, L. H. M., & Rutten, R. J. 2012, ApJL, 752, L12
- Feller, A., Gandorfer, A., Iglesias, F. A., Lagg, A. et al. 2020, SPIE, 11447, 11447AK
- Gošić, M., Bellot Rubio, L. R., Orozco Suárez, D., Katsukawa, Y., & del Toro Iniesta, J. C.
- He, K., Zhang, X., Ren, S., & Sun, J. 2015a, [arXiv:1502.01852](#)
- He, K., Zhang, X., Ren, S., & Sun, J. 2015b, [arXiv:1512.03385](#)
- Hirzberger, J., Gizon, L., Solanki, S. K., & Duvall, T. L. 2008, SoPh, 251, 417-437
- Hollweg, J. V., Jackson, S., & Galloway, D. 1982, SoPh, 75, 35-61
- Hu, J., Shen, L., Albanie, S., Sun, G., & Wu, E. 2017, [arXiv:1709.01507](#)
- Iijima, H. & Yokoyama, T. 2017, ApJ, 848, 38
- Ioffe, S., & Szegedy, C. 2015, [arXiv:1502.03167](#)
- Katsukawa, Y., & Orozco Suárez, D. 2012, ApJ, 758, 139
- Katsukawa, Y., del Toro Iniesta, J. C., Solanki, S. K., et al. 2020, SPIE, 11447, 114470Y
- Kingma, D. P. & Ba, J. 2014, [arXiv:1412.6980](#)
- Louis, R.E., Ravindra, B., Georgoulis, M.K., Küker, M. 2015, SoPh, 290, 1135-1146
- Malherbe, J. -M., Roudier, T., Stein, R., & Frank, Z. 2018, SoPh, 293, 4
- Masada, Y., & Sano, T. 2016, ApJ, 822, L22
- Matsumoto, T., & Kitai, R. 2010, ApJL, 716, L19-L22
- Moll, R., Cameron, R. H., & Schüssler, M. 2011, A&A, 533, A126
- Nordlund, A., Stein, R.F., & Asplund, M. 2009, Living Reviews in Solar Physics, 6, 2
- November, L. J., & Simon, G. W. 1988, ApJ, 333, 427
- Oba, T., Iida, Y., & Shimizu, T. 2020, ApJ, 890, 141
- Parnell, C. E. 2002, MNRAS, 335, 389-398
- Rast, M. P., Bello, G., Nazaret, B. R., Luis et al. 2021, SoPh, 296, 70
- Rempel, M. 2018, ApJ, 859, 161
- Requerey, I. S., Cobo, B. R., Gošić, M., & Bellot Rubio, L. R. 2018, A&A, 610, A84
- Riethmüller, T. L., Solanki, S. K., Berdyugina, S. V., et al. 2014, A&A, 568, A13
- Rieutord, M., Roudier, T., Rincon, F., et al. 2010, ApJ, 512, A4
- Rieutord, M. & Rincon, F. 2010, Living Reviews in Solar Physics, 7, 2
- Rimmele, T. R., Warner, M., Keil, S. L., et al. 2020, SoPh, 295, 172
- Shelyag, S., Keys, P., Mathioudakis, M., et al. 2011, A&A, 526, A5
- Shibata, K., Nakamura, T., Matsumoto, T., Otsuji, K., et al. 2007, Sci, 318, 1591
- Stein, R.F. & Nordlund, Å. 1998, ApJ, 499, 914-933
- Szegedy, C., Liu, W., Jia, Y., et al. 2014, [arXiv:1409.4842](#)
- Toriumi, S., Katsukawa, Y., & Cheung, M. C. M. 2017, ApJ, 836, 63
- Tremblay, B., Roudier, T., Rieutord, M., & Vincent, A. 2018, SoPh, 293, 57
- Tremblay, B. & Attie, R. 2020, Frontiers in Astronomy and Space Sciences, 7, 25
- Tremblay, B., Cossette, J.-F., Kazachenko, M.D., Charbonneau, P., & Vincent, A. 2021, Journal of Space Weather and Space Climate, 11, 9
- Tremblay, B., Reardon, K., Attié, R., et al. 2021, Cambridge Workshop on Cool Stars, Stellar Systems, and the Sun, 204
- Utz, D., Hanslmeier, A., Müller, R., et al. 2010, A&A, 511, A39
- van Ballegooyen, A. A., Asgari-Targhi, M., Cranmer, S. R., & DeLuca, E. E. 2011, ApJ, 736, 3
- Vargas Domínguez, S., Palacios, J., Balmaceda, L., et al. 2011, MNRAS, 416, 148-154
- Verma, M., Steffen, M., & Denker, C. 2013, A&A, 555, A136
- Vögler, A., Shelyag, S., Schüssler, M., et al. 2005, A&A, 429, 335-351
- Yokoi, N., Masada, Y., & Takiwaki, T. 2021, [arXiv:2111.08921](#) submitted to MNRAS

Appendix A: Coherence Spectrum Analysis

We introduce a new measure *coherence spectrum* for evaluating the network. In this section, we describe the definition of the coherence spectrum and provide a proof of Equation (7). When we have the spatial distributions of physical quantities X and Y , we can define the 2-dimensional cross-spectrum by using the Fourier transform as follows:

$$S_{XY}(k_x, k_y) = \hat{X}^* \hat{Y}, \quad (\text{A.1})$$

$$\hat{X}(k_x, k_y) = \frac{1}{N^2} \sum_{x,y} X(x, y) \exp[-i(k_x x + k_y y)]. \quad (\text{A.2})$$

The power spectrum is as follows:

$$E_X(k) = \frac{1}{2\Delta k} \sum_{\sqrt{k_x^2 + k_y^2} \in [k - \Delta k/2, k + \Delta k/2]} |\hat{X}(k_x, k_y)|^2, \quad (\text{A.3})$$

where Δk is the sampling interval of the wavenumber. Furthermore, the cross-spectrum is equivalent to the Fourier transform of the correlation function between X and Y , which corresponds to the Wiener–Khinchin theorem.

$$C_{XY}(\xi, \eta) = \sum_{k_x, k_y} S_{XY}(k_x, k_y) \exp[i(k_x \xi + k_y \eta)]. \quad (\text{A.4})$$

Then, we obtain the relationship between the global-correlation-coefficient R_{XY} and 2-dimensional cross-spectrum:

$$R_{XY}(0, 0) = \frac{1}{\sqrt{C_{XX}(0, 0)C_{YY}(0, 0)}} \sum_{k_x, k_y} S_{XY}(k_x, k_y). \quad (\text{A.5})$$

Here, we define the cross-spectrum by calculating the ensemble average $\langle \rangle$ and integrating the 2-dimensional cross-spectrum as follows:

$$S_{XY}(k) = \frac{1}{2\Delta k} \sum_{\sqrt{k_x^2 + k_y^2} \in [k - \Delta k/2, k + \Delta k/2]} \langle S_{XY} \rangle(k_x, k_y). \quad (\text{A.6})$$

The phase of the averaged 2-dimensional cross-spectrum corresponds to the 'average' phase difference between the two Fourier components. Given the contour integration, the imaginary part of the cross-spectrum converges to zero because $S_{XY}(-k_x, -k_y) = S_{XY}^*(k_x, k_y)$ is always satisfied. This integration is justified when the statistical isotropy is assumed or else the resultant coherence spectrum can be misleading. Consequently, the coherence spectrum defined below is a real number.

$$\gamma_{XY}(k) = \frac{S_{XY}(k)}{\sqrt{\langle E_X \rangle(k) \langle E_Y \rangle(k)}}, \quad (\text{A.7})$$

Hence, we obtain the following.

$$R_{XY}(0, 0) = \frac{\sum_k \sqrt{\langle E_X \rangle(k) \langle E_Y \rangle(k)} \gamma_{XY}(k)}{\sqrt{\sum_k \langle E_X \rangle(k) \sum_{k'} \langle E_Y \rangle(k')}}}, \quad (\text{A.8})$$

where we use equation $C_{XX}(0, 0) = \overline{X^2} = 2 \sum_k E_X(k) \Delta k$ and condition of the statistical steady state $\overline{X^2} = \langle X^2 \rangle$.